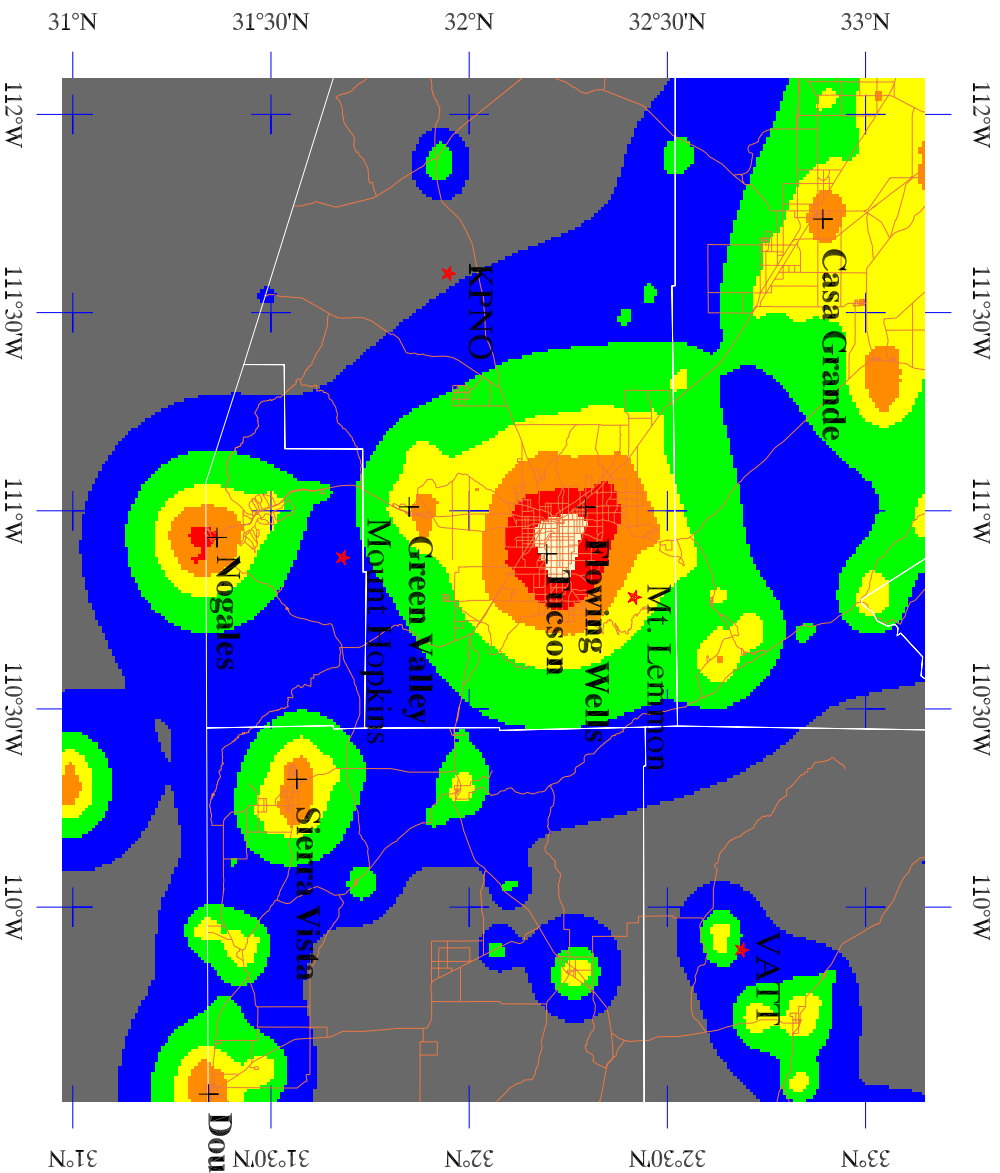


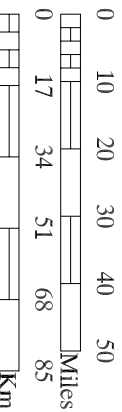
# Artificial night sky brightness near Tucson



Fraction of the natural night sky brightness

- Black: < 1%
- Dark Gray: 1%-11%
- Blue: 11%-33%
- Light Blue: 33%-100%
- Yellow: 100%-300%
- Orange: 300%-900%
- Red: 900%-2700%
- Light Red: 2700%-8100%

Cinzano/Falchi/Elvidge 2002 ISTIL/NGDC  
 Zenith night sky brightness at sea level  
 clear standard atmosphere  
 OLS-DMSP 1996/1997 data



Map Scale 1:1,600,000